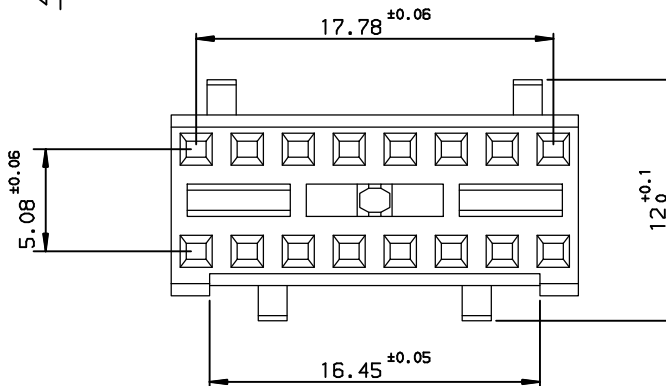
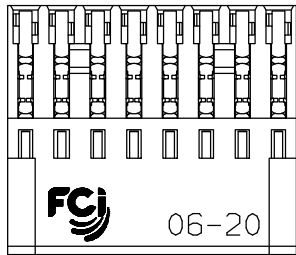
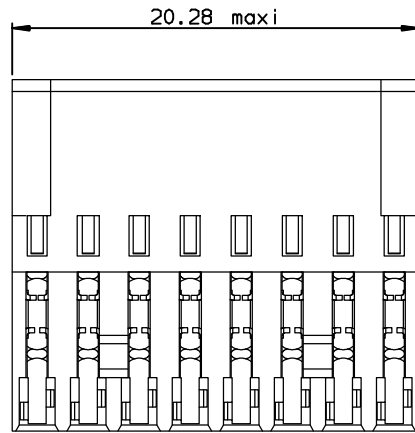
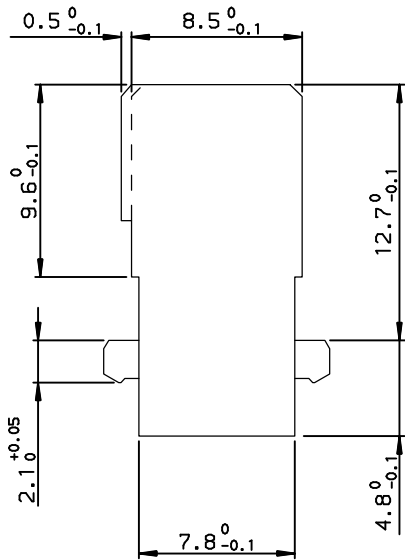


DIMENSIONS



TIN LEAD PART NUMBER

PART NUMBER
864921640622001

LEAD FREE PART NUMBER

PART NUMBER
864921640622001LF

ELECTRICAL CHARACTERISTICS

-current rating	1.5 A at 20° / 1 A at 70°
-I max	2A
-Contact resistance	≤20 mΩ
-Insulation resistance	≥5.10 ³ MΩ
-TEST VOLTAGE	
contact/contact	1000V eff (0.5 mA / 50 Hz)
contact/ground	1550V eff (0.5 mA / 50 Hz)

MECHANICAL CHARACTERISTICS

-Contact number	16
-Retention force	≥20N per contact
-Insertion force	≤15N
-Withdrawal force	≥2.5N
-Material insulator	Polyester thermoplastic
-Color	Grey RAL 7035
-Extinguishing	UL94V0
-Temperature range	- 55° C + 125° C
-Material contacts	Phosphor bronze Cu Sn 8
-Hardness	200 to 225 HV

TIN LEAD VERSION

-Finishing contact surface	Gold thickness (0.75µm mini) over Ni (2µm mini)
-Other area	Ni (1µm mini)

LEAD FREE VERSION

NOTE RoHS INFORMATION

- The "LF" products meet European Union Directives and other country regulations as described in 65-22-008.
- The housing will withstand exposure to 260°C peak temperature for 3.5 seconds in a wave solder application with a 1.6mm minimum thick circuit board. See application notes/procedures if they are available.
- Packaging spec: see 65-14-920



Copyright FCi.

European Views

www.fciconnect.com		surface ISO 1302 ✓	tolerance std ISO 406 ISO 1101	projection mm
TOLERANCES UNLESS OTHERWISE SPECIFIED				
Dr	ROUILLARD	1991/04/09	ANGULAR	0.x ±0.1
Eng	TARON	1991/04/09	LINEAR	0.xx ±0.1
Chr	LEGARE	1991/04/09	0.xx' ±2'	0.xxx ±0.1
Appr	LEGARE	1991/04/09	Product family	DIN PHILIPS
title		CONNECTOR FEM, 2 ROW		size
F-122 Ref: 3522 059 1649		catalog no		A3
Scale		4		ECN
L506-0095		Spec ref		-
Rev.		C-8649-0007		E
CUSTOMER		sheet 1 of 1		

rev	ecn no	dr	date
B	-	JTA	1997/10/03
C	L505-0056	LGO	2005/07/01
D	L506-0075	LGO	2006/05/16
E	L506-0095	LGO	2006/06/30
-	-	-	-
-	-	-	-
-	-	-	-